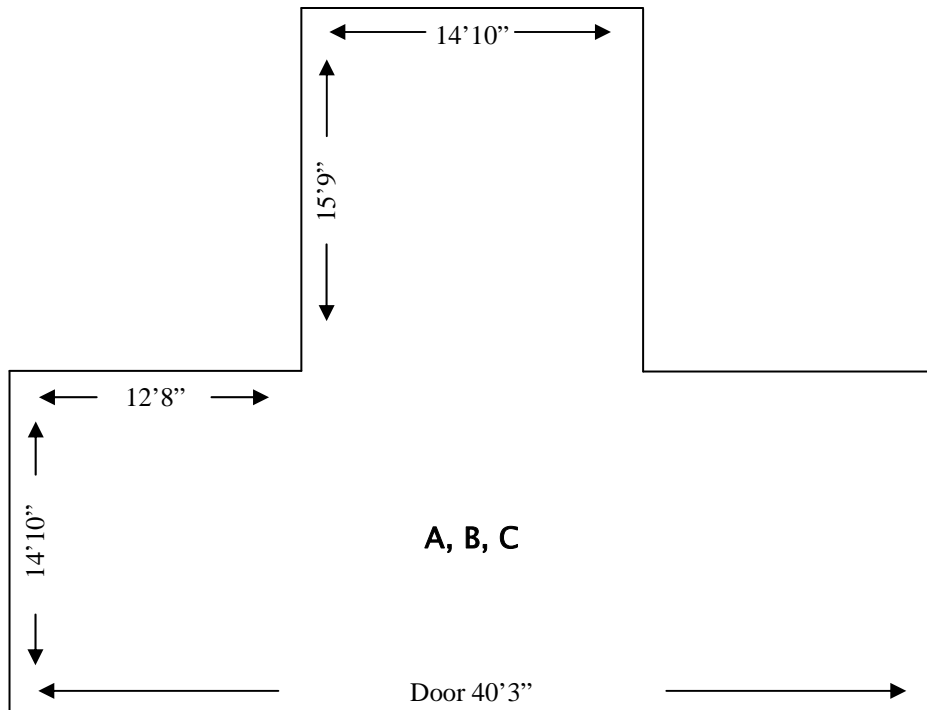




Davenport Municipal Airport

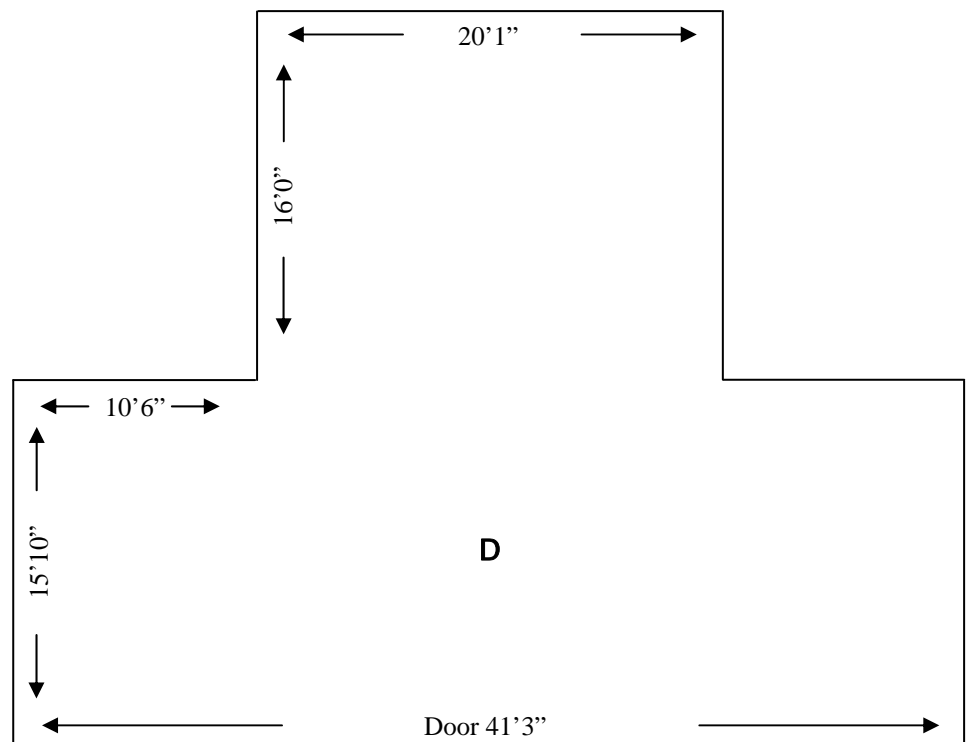


Hangar Types A, B, C

- \$105.00 Per Month
- 896sq ft
- Manual Bi-fold doors
- Walls do not go up to the roof, walls are 9ft high
- Door Height 8'8"
- Concrete floor and apron
- Storeroom available with some units for additional \$20.00 Per Month

Hangar Type D

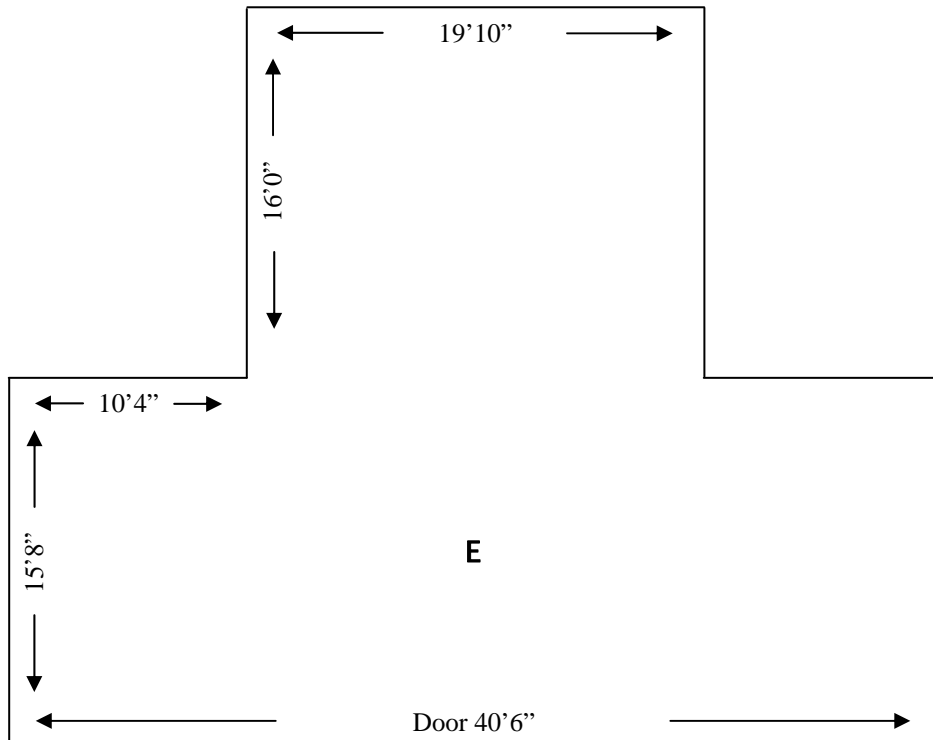
- \$127.00 Per Month
- 979 sq ft
- Electric Bi-fold doors
- Walls go up to the roof
- Door Height 9ft x 10"
- Concrete floor and apron
- Storeroom available with some units for additional \$20.00 Per Month



All sizes shown are approximate



Davenport Municipal Airport

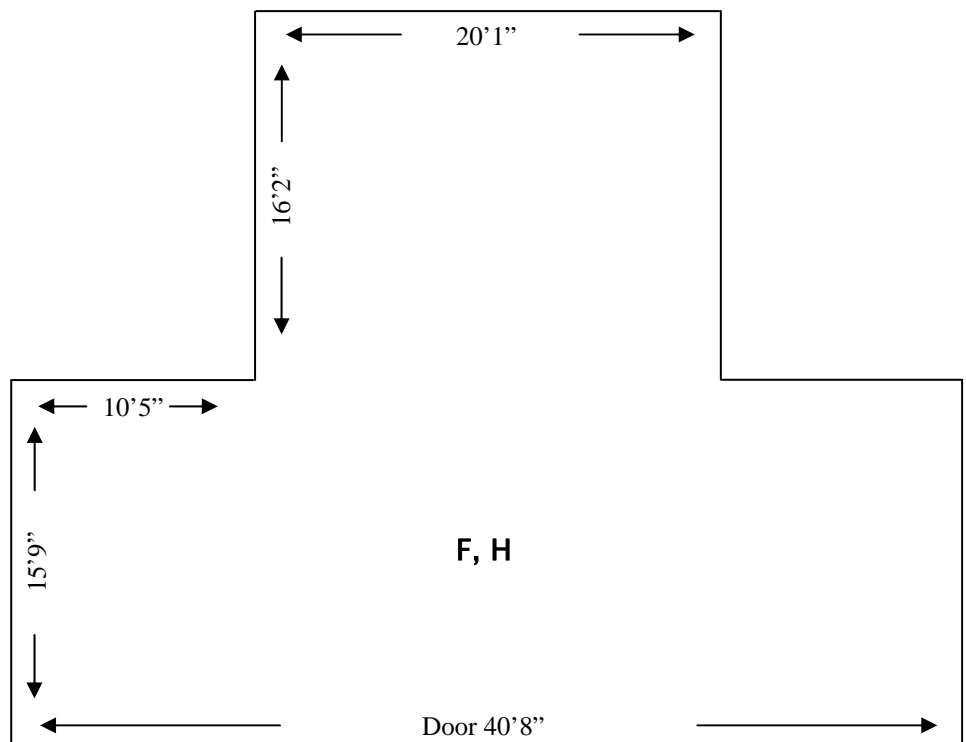


Hangar Type E

- \$127.00 Per Month
- 960 sq ft
- Electric Bi-fold doors
- Walls go up to the roof
- Door Height 9ft x 6"*
- Concrete floor and apron
- Storeroom available with some units for additional \$20.00 Per Month
- *E7 Door Height is 11'1"

Hangar Types F, H

- \$127.00 Per Month
- 978 sq ft
- Electric Bi-fold doors
- Walls go up to the roof
- Door Height 11'8"
- Concrete floor and apron
- Storeroom available with some units for additional \$20.00 Per Month



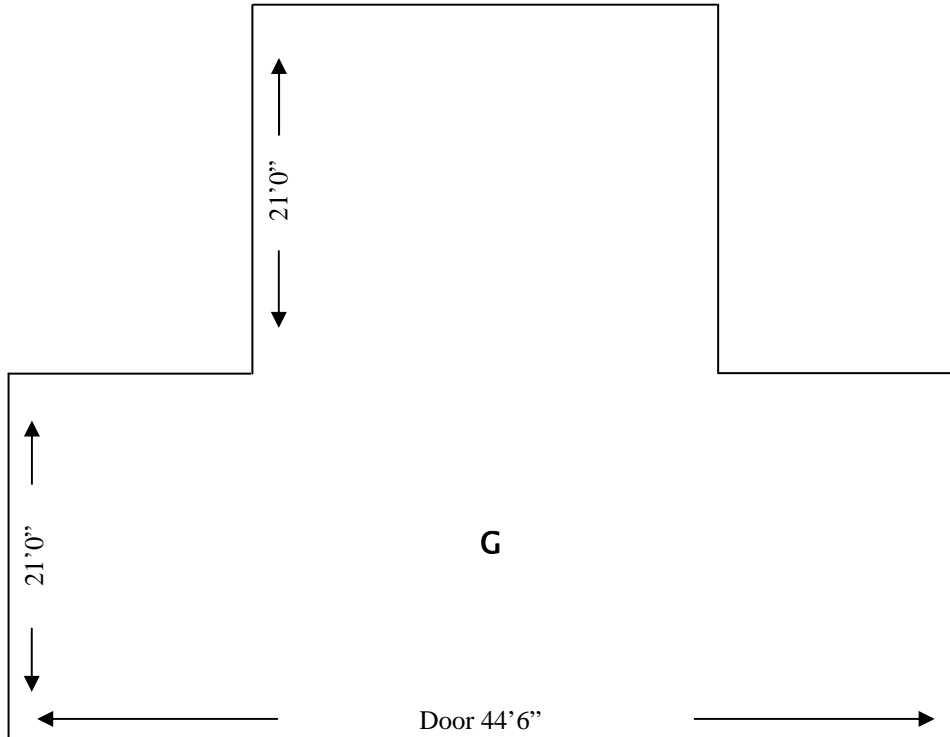
All sizes shown are approximate



Davenport Municipal Airport

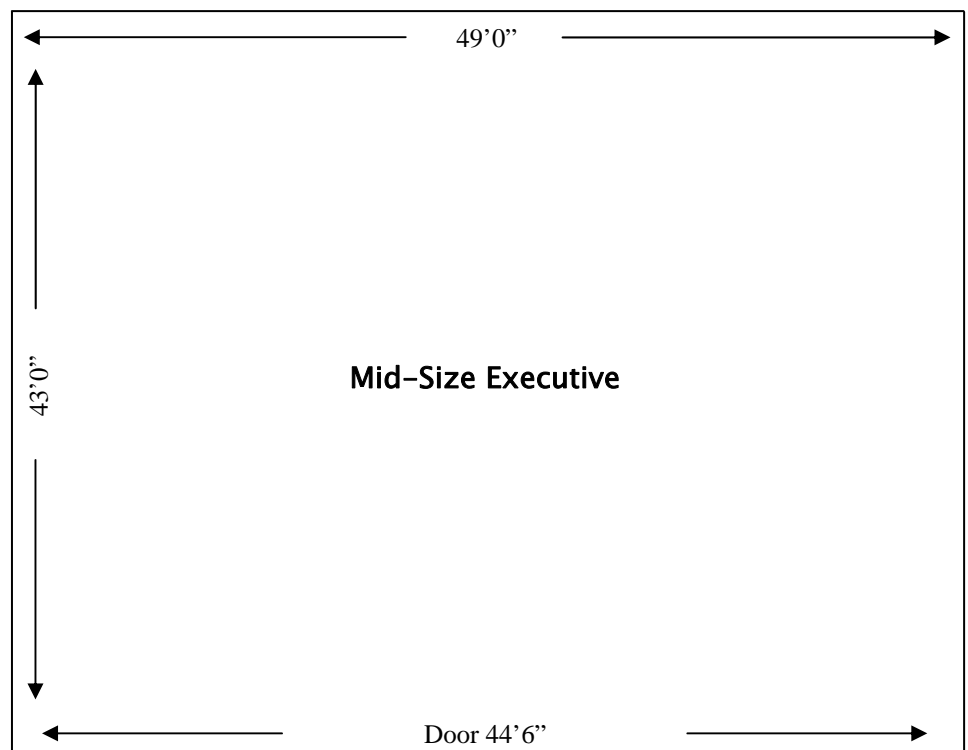
Hangar Type G

- \$235.00 Per Month
- 1,418 sq ft
- Electric Bi-fold doors
- Walls goes up to roof
- Door Height 14ft x 0"
- Concrete floor and apron
- Storeroom available with some units for additional \$20.00 Per Month



Hangar Type Mid-Size Executive

- \$285.00 Per Month
- 2,107 sq ft
- Electric Bi-fold doors
- Walls go up to the roof
- Door Height 14'0"
- Concrete floor and apron
- Storeroom available with some units for additional \$20.00 Per Month



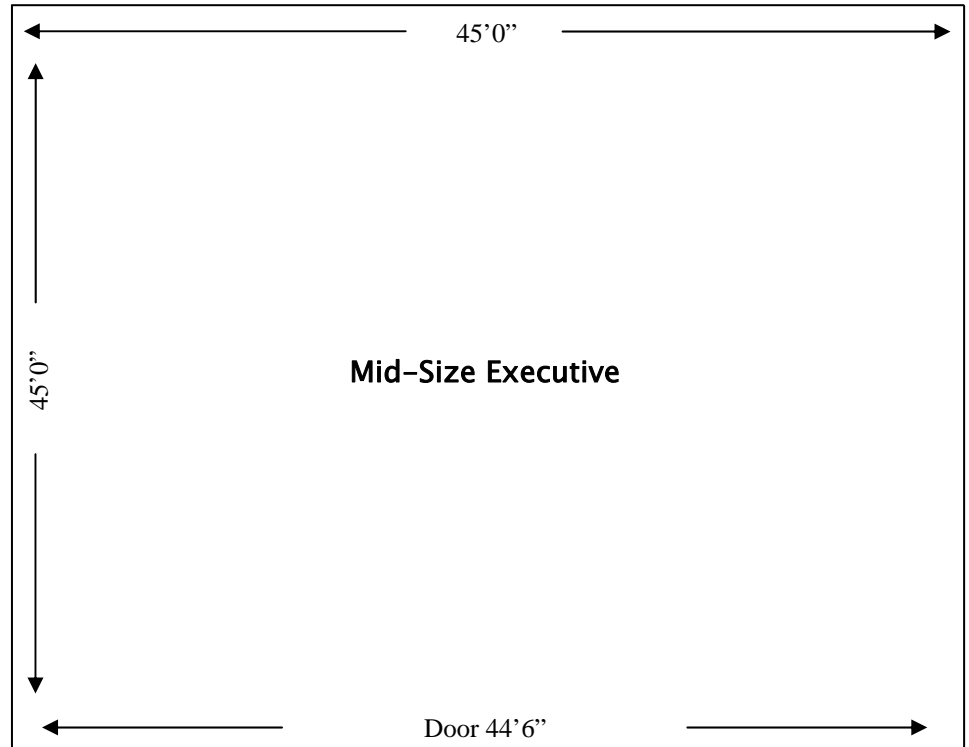
All sizes shown are approximate



Davenport Municipal Airport

Hangar Type Box

- \$300.00 Per Month
- 2,000 sq ft
- Electric Bi-fold doors
- Walls go up to the roof
- Door Height 16'0"
- Concrete floor and apron
- Heat available at tenant expense



All sizes shown are approximate